



inserts:		page
CDD	42 poles + ⊕	55
CQE	18 poles + ⊕	75
CN	10 poles + ⊕	81
CCE	10 poles + ⊕	88
CNE, CSE	10 poles + ⊕	89
CSS	10 poles + ⊕	100
CMSE	3+2 (aux) poles + ⊕	114
CMCE	3+2 (aux) poles + ⊕	114
CX	8/24 poles + ⊕	129
MIXO	3 modules	137-151

insert centre distance:  
57 x 27 mm

surface mounting housings with 2 levers or 4 pegs



surface mounting housings with single lever



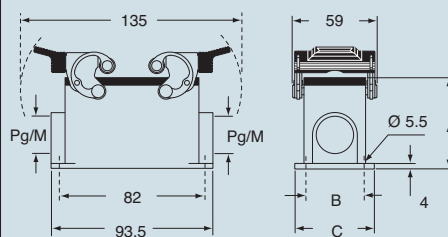
description	part No.	entry Pg	part No.	entry M	part No.	entry Pg	part No.	entry M
with levers	CHP 10	16	MHP 10.20	20	CHP 10 L	16	MHP 10 L20	20
with levers	CHP 10.2	16 x 2	MHP 10.220	20 x 2	CHP 10 L2	16 x 2	MHP 10 L220	20 x 2
with levers, high construction	CAP 10.21	21	MAP 10.32	32	CAP 10 L	21	MAP 10 L32	32
with levers, high construction	CAP 10.221	21 x 2	MAP 10.232	32 x 2	CAP 10 L2	21 x 2	MAP 10 L232	32 x 2
with levers, high construction	CAP 10.29	29	MAP 10.40	40	CAP 10 L29	29	MAP 10 L40	40
with levers, high construction	CAP 10.229	29 x 2	MAP 10.240	40 x 2	CAP 10 L229	29 x 2	MAP 10 L240	40 x 2
with pegs and aluminium cover <sup>1)</sup>	CHP 10 CS	16	MHP 10 CS20	20				
with pegs and aluminium cover <sup>1)</sup>	CHP 10 CS2	16 x 2	MHP 10 CS220	20 x 2				
with pegs and aluminium cover, high construction <sup>1)</sup>	CAP 10 CS	21	MAP 10 CS32	32				
with pegs and aluminium cover, high construction <sup>1)</sup>	CAP 10 CS2	21 x 2	MAP 10 CS232	32 x 2				
with pegs and aluminium cover, high construction <sup>1)</sup>	CAP 10 CS29	29	MAP 10 CS40	40				
with pegs and aluminium cover, high construction <sup>1)</sup>	CAP 10 CS229	29 x 2	MAP 10 CS240	40 x 2				
with pegs and plastic cover <sup>1)</sup>	CHP 10 CP	16	MHP 10 CP20	20				
with pegs and plastic cover <sup>1)</sup>	CHP 10 CP2	16 x 2	MHP 10 CP220	20 x 2				
with pegs and plastic cover, high construction <sup>1)</sup>	CAP 10 CP	21	MAP 10 CP32	32				
with pegs and plastic cover, high construction <sup>1)</sup>	CAP 10 CP2	21 x 2	MAP 10 CP232	32 x 2				
with pegs and plastic cover, high construction <sup>1)</sup>	CAP 10 CP29	29	MAP 10 CP40	40				
with pegs and plastic cover, high construction <sup>1)</sup>	CAP 10 CP229	29 x 2	MAP 10 CP240	40 x 2				
with lever and cover					CHP 10 LS	16	MHP 10 LS20	20
with lever and cover					CHP 10 LS2	16 x 2	MHP 10 LS220	20 x 2
with lever and cover, high construction					CAP 10 LS	21	MAP 10 LS32	32
with lever and cover, high construction					CAP 10 LS2	21 x 2	MAP 10 LS232	32 x 2
with lever and cover, high construction					CAP 10 LS29	29	MAP 10 LS40	40
with lever and cover, high construction					CAP 10 LS229	29 x 2	MAP 10 LS240	40 x 2

<sup>1)</sup> May be combined with hoods:  
- CHO/CAO 10 X and CHV/CAV 10 X  
- MHO/MAO 10 X and MHV/MAV 10 X

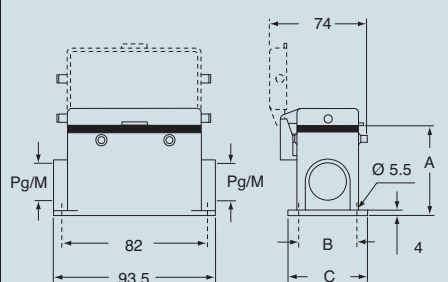
**N.B.:** the enclosures ensure IP66 protection (or IP65 cover versions) rating when mated and locked with the closing levers.  
The cover (CS, CP) only ensures mechanical protection, but does not ensure IP65 protection rating.

dimensions in mm

CHP - CAP and MHP - MAP



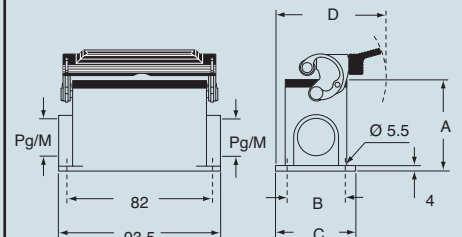
CHP CS/CP - CAP CS/CP and MHP CS/CP - MAP CS/CP



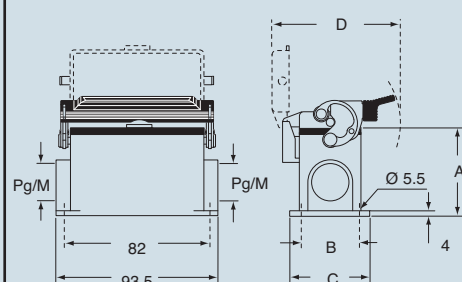
type	A	B	C
CHP / MHP	57	40	52
CAP / MAP	74	45	57
CHP CS / MHP CS	57	40	52
CAP CS / MAP CS	74	45	57
CHP CP / MHP CP	57	40	52
CAP CP / MAP CP	74	45	57

dimensions in mm

CHP L - CAP L and MHP L - MAP L



CHP LS - CAP LS and MHP LS - MAP LS



type	A	B	C	D
CHP L / MHP L	57	40	52	79.5
CAP L / MAP L	74	45	57	82
CHP LS / MHP LS	57	40	52	97
CAP LS / MAP LS	74	45	57	97

**CAUS**® Type 4/4X/12

(excluding enclosures with plastic cover)

dimensions shown are not binding and may be changed without notice

size 57.27